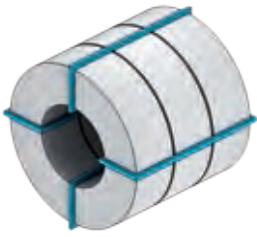


## Standard packaging

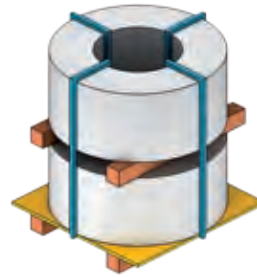
Ejemplos de embalajes estándar



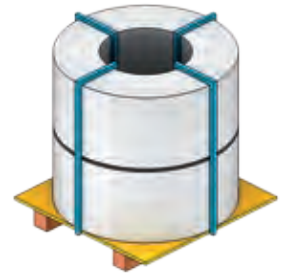
BN1 / C



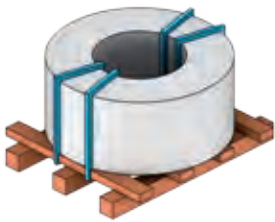
BN2 / C / M



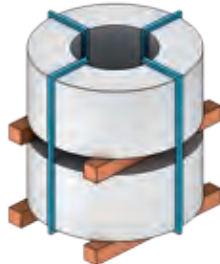
BN3 / 1-2-3-4-5-6



BN4 / 1-2-3



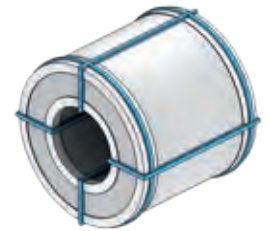
BN6 / 1-2-3-4-5



BN7 / 1-2-3-4-5-6



BN8 / 1-2-3



BN1M

	BN1	BN2	BN3	BN4	BN6	BN7	BN8
Eye-to-side <i>Hoyo eje horizontal</i>	●						
Eye-to-side cradle <i>Asiento eje horizontal</i>		●					
Eye-to-sky pallet <i>Pallet con pies y ejes</i>			●	●			
Wood pieces <i>Embalaje sobre 2 maderas</i>						●	●
Pallet 8x8 <i>Pallet 8x8</i>					●		
20-mm spacers <i>Distanciadores de 20 mm</i>			(1)		(1)	(1)	
40-mm spacers <i>Distanciadores de 40 mm</i>			(2)		(2)	(2)	
80-mm spacers <i>Distanciadores de 80 mm</i>			(3)			(3)	
Plastic protection for wood pieces <i>Plástico en las maderas</i>			(4)	(1)	(3)	(4)	(1)
Plastic film <i>Película de plástico</i>			(5)	(2)	(4)	(5)	(2)
Bitumen and poly-coated paper <i>Papel alquitranado y polietenado</i>	(C)	(C)	(6)	(3)	(5)	(6)	(3)
Metal box <i>Caja metálica</i>	(M)	(M)					

NON-STANDARD  
PACKAGING  
IS DEVELOPED  
ACCORDING TO  
CUSTOMER REQUEST

*EMBALAJES  
ESPECÍFICOS  
SON DISEÑADOS  
Y SUMINISTRADOS  
DE ACUERDO  
CON EL CLIENTE*

