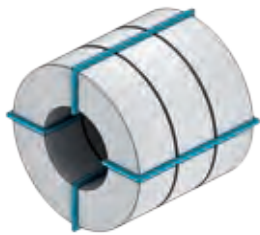
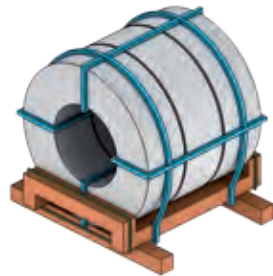


## Standard packaging

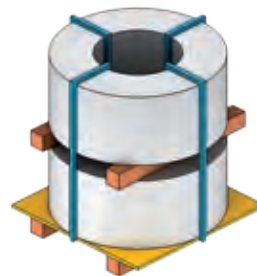
Ejemplos de embalajes estándar



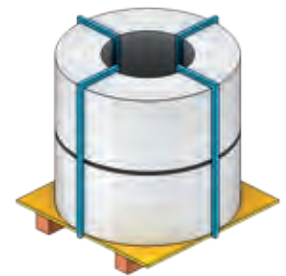
BN1 / C



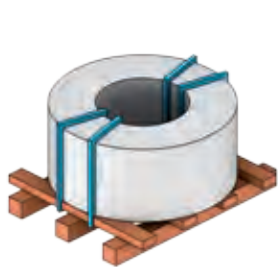
BN2 / C / M



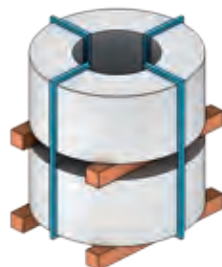
BN3 / 1-2-3-4-5-6



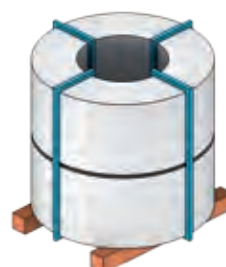
BN4 / 1-2-3



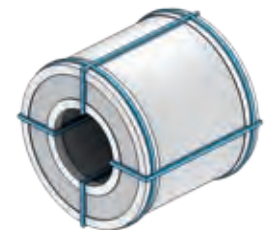
BN6 / 1-2-3-4-5



BN7 / 1-2-3-4-5-6



BN8 / 1-2-3



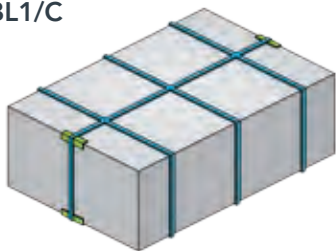
BN1M

|  | BN1 | BN2 | BN3 | BN4 | BN6 | BN7 | BN8 |
|--|-----|-----|-----|-----|-----|-----|-----|
| Eye-to-side<br><i>Hoyo eje horizontal</i>  | ●   |     |     |     |     |     |     |
| Eye-to-side cradle<br><i>Asiento eje horizontal</i>                                |     | ●   |     |     |     |     |     |
| Eye-to-sky pallet<br><i>Pallet con pies y ejes</i>                                 |     |     | ●   | ●   |     |     |     |
| Wood pieces<br><i>Embalaje en 2 maderas</i>  |     |     |     |     |     | ●   | ●   |
| Pallet 8x8<br><i>Pallet 8x8</i>  |     |     |     |     | ●   |     |     |
| 20-mm spacers<br><i>Espaciadores de 20 mm</i>                                      |     |     | (1) |     | (1) | (1) |     |
| 40-mm spacers<br><i>Espaciadores de 40 mm</i>                                      |     |     | (2) |     | (2) | (2) |     |
| 80-mm spacers<br><i>Espaciadores de 80 mm</i>                                      |     |     | (3) |     |     | (3) |     |
| Plastic protection for wood pieces<br><i>Plástico en las maderas</i>               |     |     | (4) | (1) | (3) | (4) | (1) |
| Plastic film<br><i>Película de plástico</i>  |     |     | (5) | (2) | (4) | (5) | (2) |
| Bitumen<br>and poly-coated paper<br><i>Papel alquitranado<br/>y de polietileno</i> | (C) | (C) | (6) | (3) | (5) | (6) | (3) |
| Metal box<br><i>Caja metálica</i>  | (M) | (M) |     |     |     |     |     |

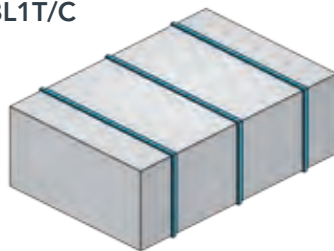
## Standard packaging

Ejemplos de embalajes estándar

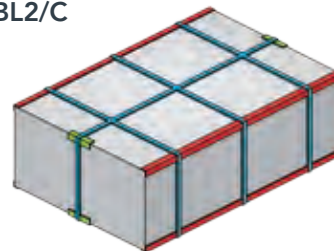
BL1/C



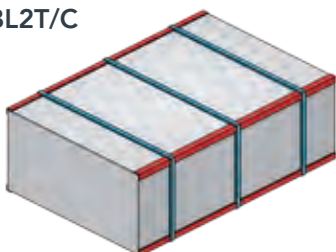
BL1T/C



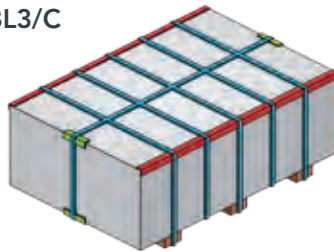
BL2/C



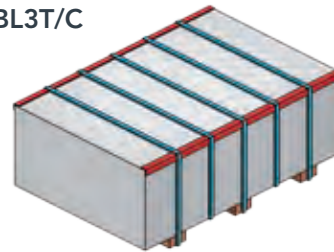
BL2T/C



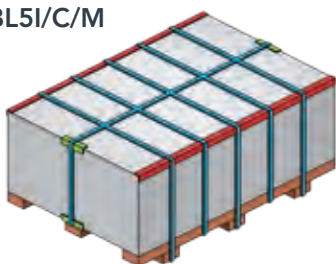
BL3/C



BL3T/C



BL5I/C/M



BL5IT/C/M



### Weight of standard packed unit

Peso del paquete estándar

< 5,00 t

|   | BL1 | BL1C | BL1T | BL1TC | BL2 | BL2C | BL2T | BL2TC | BL3 | BL3C | BL3T | BL3TC | BL5I | BL5IC | BL5IM | BL5IT | BL5ITC | BL5ITM |   |
|---|-----|------|------|-------|-----|------|------|-------|-----|------|------|-------|------|-------|-------|-------|--------|--------|---|
| Cross straps<br><i>Precintos transversales</i>                    | ●   | ●    | ●    | ●     | ●   | ●    | ●    | ●     | ●   | ●    | ●    | ●     | ●    | ●     | ●     | ●     | ●      | ●      | ● |
| Longitudinal straps<br><i>Precintos longitudinales</i>            | ●   | ●    |      |       | ●   | ●    |      |       | ●   | ●    |      |       | ●    | ●     | ●     |       |        |        |   |
| Corner<br><i>Perfil angular</i>                                   |     |      |      |       | ●   | ●    | ●    | ●     | ●   | ●    | ●    | ●     | ●    | ●     | ●     | ●     | ●      | ●      | ● |
| Wood pieces<br><i>Vigueta de apoyo</i>                            |     |      |      |       |     |      |      |       | ●   | ●    | ●    | ●     |      |       |       |       |        |        |   |
| Pallet<br><i>Pallet</i>   |     |      |      |       |     |      |      |       |     |      |      |       | ●    | ●     | ●     | ●     | ●      | ●      | ● |
| Polyethylene raffia<br><i>Protección con rafia de polietileno</i> |     | ●    |      | ●     |     | ●    |      | ●     |     | ●    |      | ●     |      | ●     |       |       |        | ●      |   |
| Metal box<br><i>Caja metálica</i>                                 |     |      |      |       |     |      |      |       |     |      |      |       |      |       | ●     |       |        |        | ● |